



SET SOLOS



POP
ICONS



SUNDAY 22ND MARCH

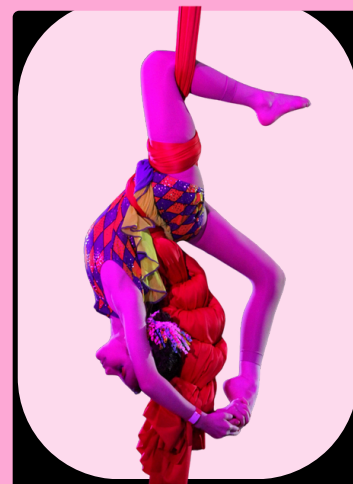




DISCLAIMER

PARTICIPANTS WHO CHOOSE TO LEARN OR REPLICATE ANY OF THE FLY HIGH SET SOLOS DO SO AT THEIR OWN RISK. WHILE FLY HIGH COMPETITIONS PROVIDES THESE ROUTINES FOR INSPIRATION AND EDUCATIONAL PURPOSES, WE ACCEPT NO RESPONSIBILITY FOR ANY INJURIES, ACCIDENTS OR OTHER ISSUES THAT MAY OCCUR AS A RESULT OF ATTEMPTING TO PERFORM OR PRACTICE THESE ROUTINES.

IT IS THE RESPONSIBILITY OF EACH INDIVIDUAL TO ENSURE THEY ARE WORKING WITHIN THEIR OWN SKILL LEVEL, IN A SAFE ENVIRONMENT, AND UNDER APPROPRIATE SUPERVISION IF REQUIRED. FLY HIGH COMPETITIONS CANNOT BE HELD LIABLE FOR ANY HARM OR DAMAGES SUSTAINED IN CONNECTION WITH THE USE OR PERFORMANCE OF THESE ROUTINES.





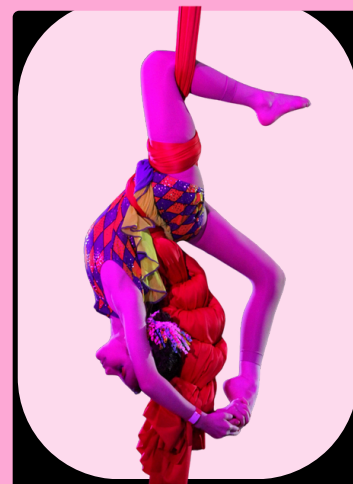
REMINDER

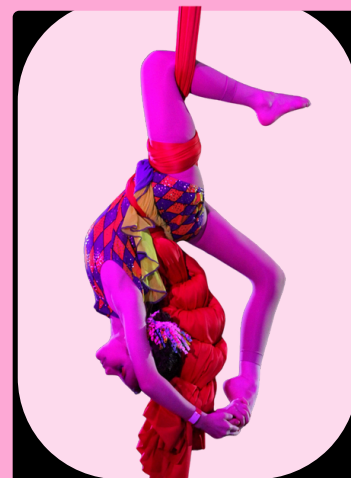
THESE VIDEOS FEATURE REAL STUDENTS WHO ARE CURRENTLY PROGRESSING THROUGH THEIR AERIAL & PERFORMANCE TRAINING JOURNEY AND HAVE GENEROUSLY VOLUNTEERED THEIR TIME TO SUPPORT THE FLY HIGH COMMUNITY.

THE PURPOSE OF THESE VIDEOS IS TO SHOWCASE CHOREOGRAPHY AND MUSICALITY, AND WHILE THE PERFORMERS ARE STILL REFINING THEIR TECHNIQUE & PERFORMANCE, THEIR STRENGTH, DEDICATION AND ENTHUSIASM ARE TRULY INSPIRING TO US ALL.

WE WOULD PERSONALLY LIKE TO THANK NIAMH, MEG, JADE, ROSIE & ARABELLA FOR THEIR HARD WORK

LOVE FLY HIGH X





SET ROUTINES ARE PRE CHOREOGRAPHED ROUTINES SET BY THE COMPETITION LEARNT PRIOR TO THE EVENT. THEY ARE PERFORMED TO A PANEL OF JUDGES BY 4 TO 8 AERIALISTS AT THE SAME TIME. JUDGES WILL SCORE EACH PERFORMER BASED ON THE BELOW JUDGING CRITERIA WHICH WILL SELECT THE FINALISTS WHO WILL THEN COMPETE AGAIN TO PLACE IN THE TOP 3 - TOP 5. THE AMOUNT OF ENTRIES IN EACH AGE/ABILITY WILL DETERMINE HOW MANY ROUNDS THE AERIALISTS NEED TO COMPETE TO GET TO THE FINAL ROUND



WHY ?

WE KNOW HOW HARD OUR AERIALISTS AND THEIR AERIAL INSTRUCTORS WORK WHEN IT COMES TO COMPETITION AND CHOREOGRAPHY SEASON SO WE WANTED TO CREATE A SECTION WHICH GIVES OUR TEACHERS AND AERIALISTS TIME TO RELAX AND ENJOY TEACHING/LEARNING A ROUTINE WITH LESS PRESSURE. THIS SECTION ALSO OFFERS YOU OPPORTUNITY TO MAKE AERIAL COMPETITIONS MORE INCLUSIVE FOR YOUR SCHOOL BY LEARNING THE ROUTINES IN CLASS AND GIVING THOSE STUDENTS WHO MAY NOT BE ABLE TO ATTEND 12IS AND PRIVATE SOLO LESSONS A COMPETITIVE PERFORMANCE OPPORTUNITY. IT ALSO GIVES YOU CHANCE TO COMPETE AND SHOWCASE IN MORE DIVISIONS THROUGHOUT THE DAY MAKING THE MOST OUT OF YOUR DAY.



HOW ITS SCORED

50% TECHNIQUE
50% PERFORMANCE



BEGINNERS SILKS SET SOLO

Performers are not required to perform routines in the same direction, orientation, or side as demonstrated in the video. As long as the skills and musicality are consistent with the original routine, this will not be judged. We actively encourage performers to add their own characterisation, arm movements, and personal flair during and between the skills. Make the routine your own while maintaining the technical and musical structure.

SONG: HALO- BEYONCE

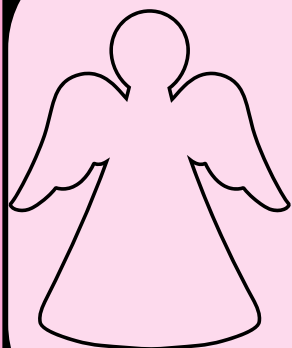
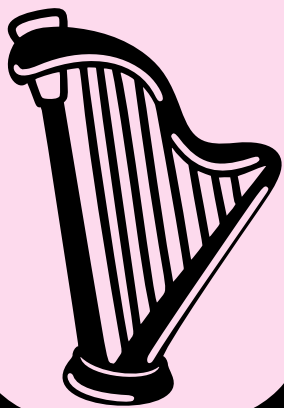
CHOREOGRAPHY NOTES:

0-0:20 SECS: OWN FLOORWORK CHOREOGRAPHY
2:13: DISMOUNT & BOW



[CLICK HERE FOR VIDEO](#)

PASSWORD HAS BEEN SENT OUT TO YOUR
INSTRUCTORS & INDEPENDANT ENTRIES



INTERMEDIATE SILKS SET

Performers are not required to perform routines in the same direction, orientation, or side as demonstrated in the video. As long as the skills and musicality are consistent with the original routine, this will not be judged. We actively encourage performers to add their own characterisation, arm movements, and personal flair during and between the skills. Make the routine your own while maintaining the technical and musical structure.

SONG: I WILL ALWAYS LOVE YOU- WHITNEY HOUSTON

CHOREOGRAPHY NOTES:

USE MUSIC ON THE VIDEO FOR A GUIDE ON WHERE
TO START YOUR OWN FLOORWORK
CHOREOGRAPHY
END: DISMOUNT & BOW

ALWAYS
love ♥
♥ YOU

CLICK HERE FOR VIDEO

PASSWORD HAS BEEN SENT OUT TO YOUR
INSTRUCTORS & INDEPENDANT ENTRIES



*love
you*



*love
you*



ADVANCED SILKS SET

Performers are not required to perform routines in the same direction, orientation, or side as demonstrated in the video. As long as the skills and musicality are consistent with the original routine, this will not be judged. We actively encourage performers to add their own characterisation, arm movements, and personal flair during and between the skills. Make the routine your own while maintaining the technical and musical structure.

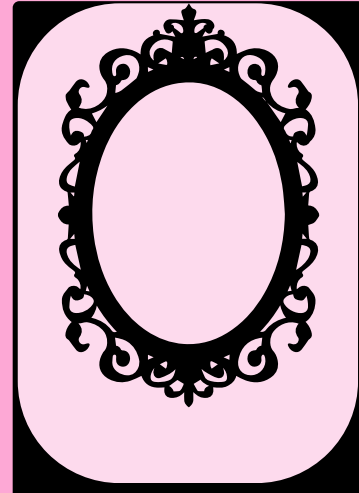
SONG: MAN IN THE MIRROR MICHAEL JACKSON

CHOREOGRAPHY NOTES:

COMING SOON

VIDEO COMING SOON

PASSWORD HAS BEEN SENT OUT TO YOUR
INSTRUCTORS & INDEPENDANT ENTRIES



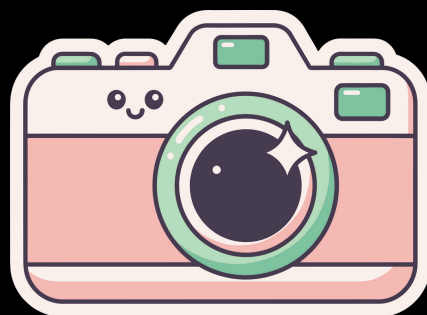
BEGINNERS HOOP SET SOLO

Performers are not required to perform routines in the same direction, orientation, or side as demonstrated in the video. As long as the skills and musicality are consistent with the original routine, this will not be judged. We actively encourage performers to add their own characterisation, arm movements, and personal flair during and between the skills. Make the routine your own while maintaining the technical and musical structure.

SONG: MATERIAL GIRL MADONNA

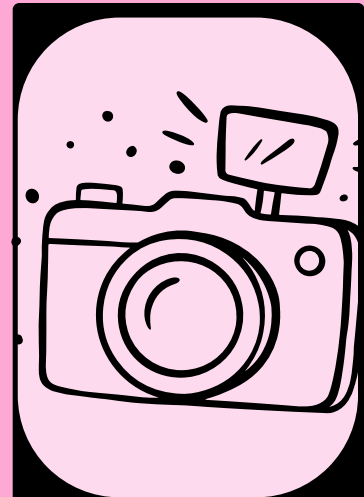
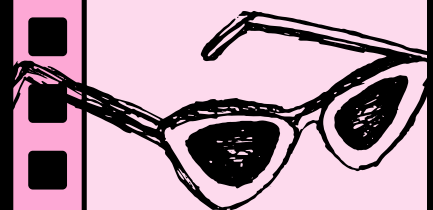
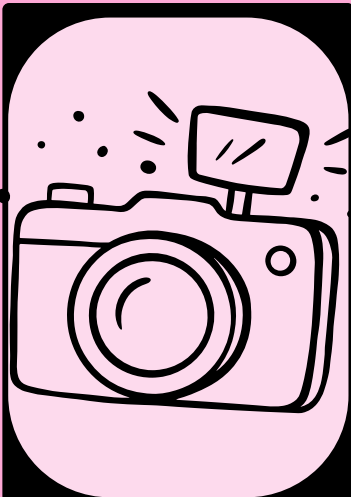
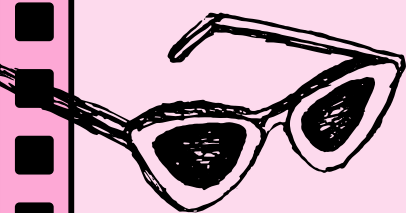
CHOREOGRAPHY NOTES:

USE MUSIC ON THE VIDEO FOR A GUIDE ON WHERE
TO START YOUR OWN FLOORWORK
CHOREOGRAPHY
END: DISMOUNT & BOW



[CLICK HERE FOR VIDEO](#)

PASSWORD HAS BEEN SENT OUT TO YOUR
INSTRUCTORS & INDEPENDANT ENTRIES



INTERMEDIATE HOOP SET

Performers are not required to perform routines in the same direction, orientation, or side as demonstrated in the video. As long as the skills and musicality are consistent with the original routine, this will not be judged. We actively encourage performers to add their own characterisation, arm movements, and personal flair during and between the skills. Make the routine your own while maintaining the technical and musical structure.

SONG: BORN THIS WAY LADY GAGA

CHOREOGRAPHY NOTES:

USE MUSIC ON THE VIDEO FOR A GUIDE ON WHERE
TO START YOUR OWN FLOORWORK

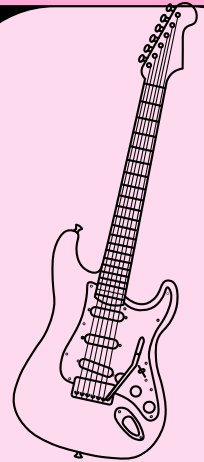
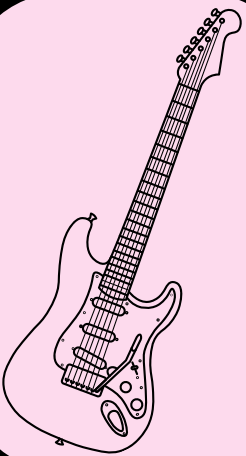
CHOREOGRAPHY

END: DISMOUNT & BOW



[CLICK HERE FOR VIDEO](#)

PASSWORD HAS BEEN SENT OUT TO YOUR
INSTRUCTORS & INDEPENDANT ENTRIES



ADVANCED SILKS SET

Performers are not required to perform routines in the same direction, orientation, or side as demonstrated in the video. As long as the skills and musicality are consistent with the original routine, this will not be judged. We actively encourage performers to add their own characterisation, arm movements, and personal flair during and between the skills. Make the routine your own while maintaining the technical and musical structure.

SONG: PROUD MARY TINA TURNER

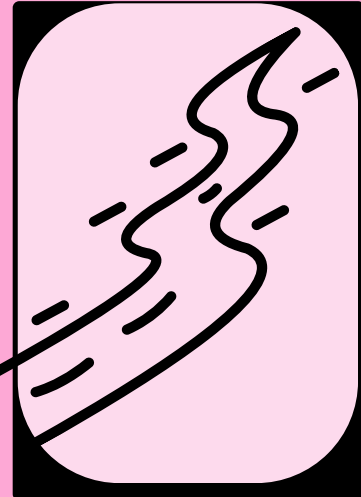
CHOREOGRAPHY NOTES:

COMING SOON

PS - ITS FAST

VIDEO COMING SOON

PASSWORD HAS BEEN SENT OUT TO YOUR
INSTRUCTORS & INDEPENDANT ENTRIES





FIRST AID
TEAM

TOILETS

ENTRANCE

ENTER STAGE HERE

WARM UP AREA

EQUIPMENT
STORAGE

BACKSTAGE

PERFORMANCE
AREA

SIGN IN

COLLECT SOLO
NUMBERS

FLY HIGH
MERCH
STALL

PHOTOGRAPHY

CAFE

TIERED SEATING

TIERED SEATING

TIERED SEATING



**SEE YOU
IN MARCH!**

**TEAM FLY HIGH
COMPETITIONS
X**

